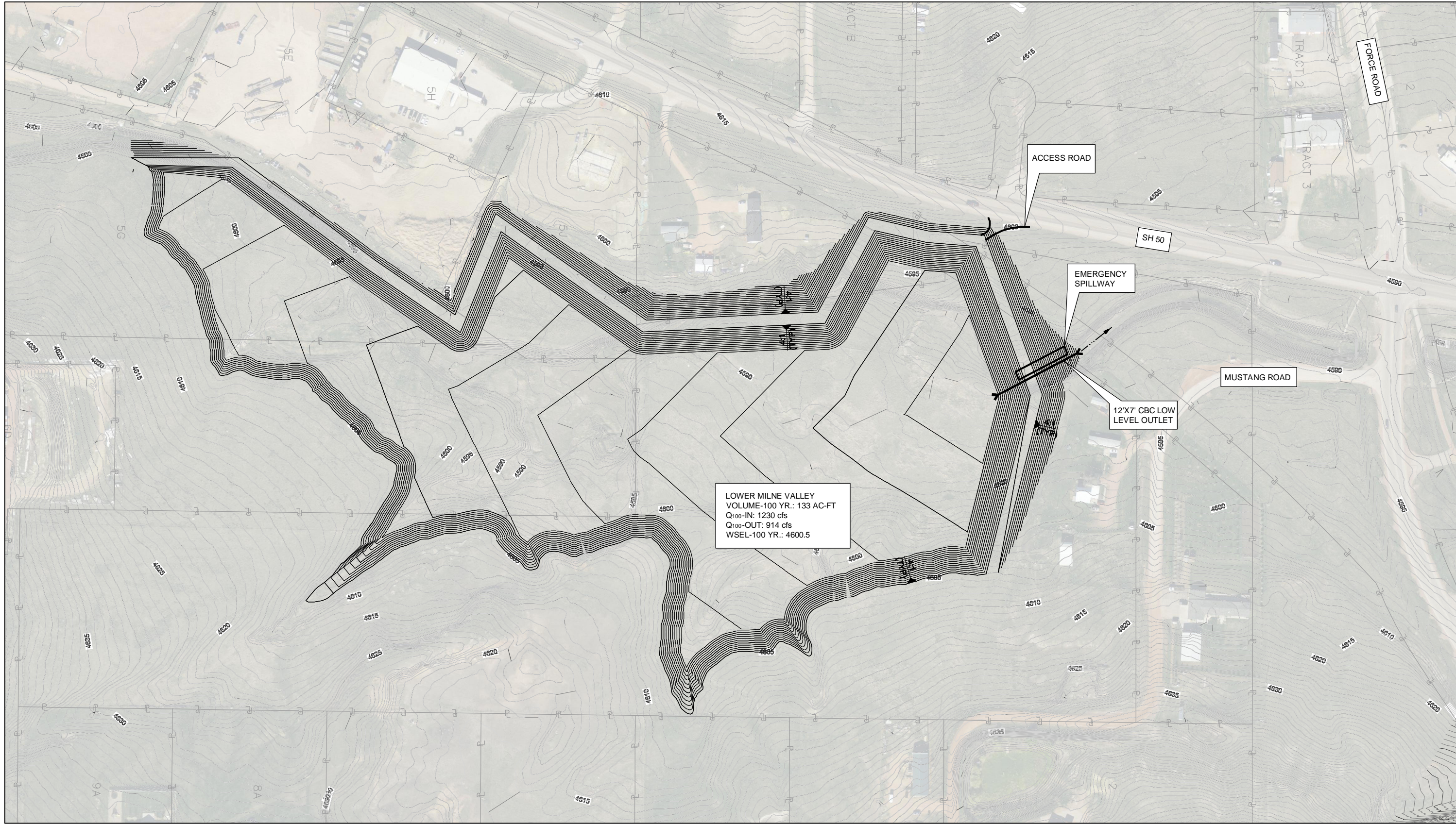
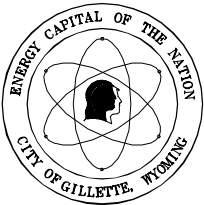


T:\Projects\22241713_Gillette_Stormwater\Submittal\00\00_000_000\005_Working_Files\Rail-Pond_Volumes\GILLETTE.dwg [BAT] Milne Valley.dwg

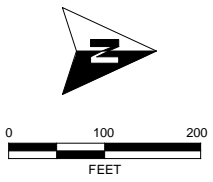


NOTES:

1. GRADING ON POND BOTTOM SHALL PRESERVE NATURAL LOW FLOW CHANNEL.



URS



Milne Valley Detention
Conceptual Design

Milne Valley Lower

AUGUST 2011

CITY OF GILLETTE
201 E. 5TH STREET, P.O. BOX 3003
GILLETTE, WYOMING 82717
(307) 686-5364